

State of Wyoming Corner Record

(In compliance with the **CORNER PERPETUATION AND FILING ACT**, Wyoming Statutes, 1997 Section 33-29-140 et. seq., and the Rules and Regulations of the Board of Professional Engineers and Professional Land Surveyors)

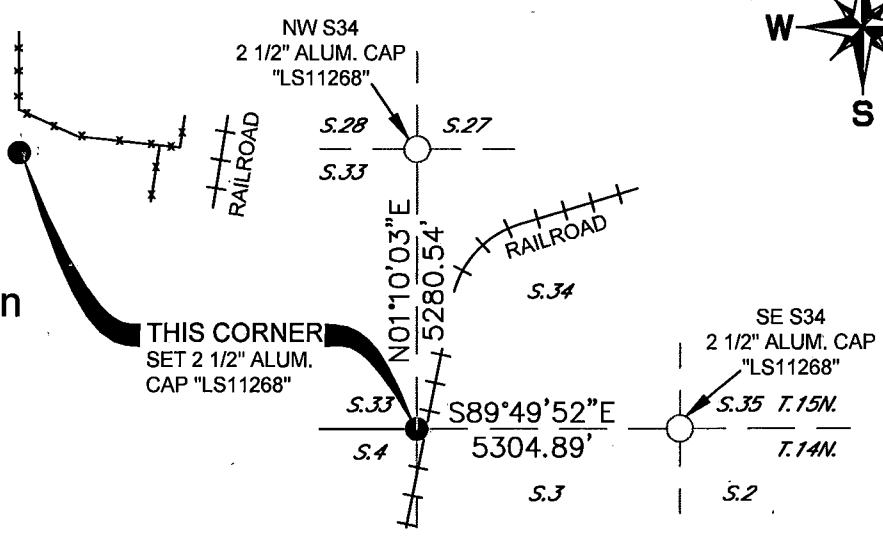
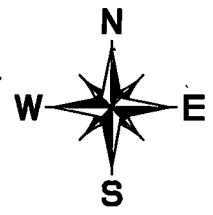
Record of original survey and citation of source of historical information (if corner is lost or obliterated). Description of corner monumentation evidence found and/or monument and accessories established to perpetuate the location of this corner. Sketch of relative location of monument, accessories, and reference points with course and distance to adjacent corner(s) (if determined in this survey).

Original Record: (James Rogers - 1871) Set sand stone 19x12x3 for corner to sections 33, 34, 3 & 4

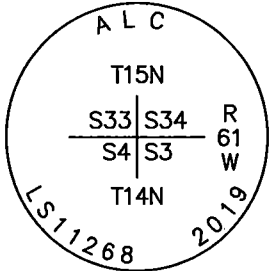
Subsequent Record: Union Pacific Railroad Right-of-Way Plans. Plans show this corner as "No Stone".

Evidence Found: No evidence of original stone. I evaluated fences in all directions from approximate corner and also the ties shown on the Railroad Plans. I determined the railroad ties to not fit occupational evidence and also rejected ties because they were labeled "No Stone" on plans. I held center of fenced off Road Right-of-Way to the South for the East-West positioning and the extended fences East and West of corner for the North-South positioning.

Perpetuation: At the determined position, I set a 5/8" x 24" rebar with 2 1/2" diameter aluminum cap marked as shown below. Cap is set 1" below ground and situated as shown below.



Monument Inscription

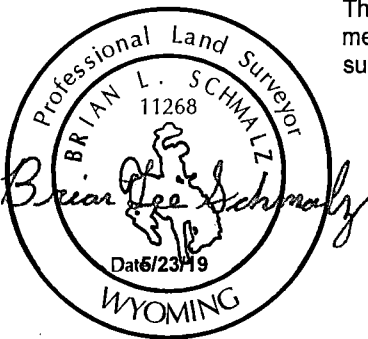


2 1/2 INCH DIAMETER ALUMINUM CAP

Date of Field Work: 05-02-2019 Office Reference: Book 48 Pg 6

Cross Index Plat

1	2	3	4	5	6	7	8	9	10	11	12	13	14	15	16	17	18	19	20	21	22	23	24	25	
A																									A
B																									B
C		6			5				4					3					2						C
D																									D
E																									E
F																									F
G						7			8					9					10						G
H																									H
J																									J
K																									K
L																									L
M																									M
N																									N
O																									O
P																									P
Q																									Q
R																									R
S																									S
T																									T
U																									U
V																									V
W																									W
X																									X
Y																									Y
Z																									Z
1	2	3	4	5	6	7	8	9	10	11	12	13	14	15	16	17	18	19	20	21	22	23	24	25	



This corner record was prepared by me or under my direction and supervision.

BRIAN L. SCHMALZ
PLS 11268

PO BOX 502 | 135 PINE STREET
BUFFALO, WY 82834 | 307.684.1200



Altitude Land Consulting, P.C.
ENGINEERING | SURVEYING | CONSULTING



RECP #: 754170
RECORDED 5/30/2019 AT 3:22 PM BK# 2623 PG# 667
Debra K. Lee, CLERK OF LARAMIE COUNTY, WY PAGE 1 OF 1

Corner Name NW SW Sections 3 14 61 T 15 N, R 61 W, 6th P.M. County.: LARAMIE Cross-Index No.: A-13 Z-13